



***Injection Moulding
Tools Manufacturing***



Plastic Molding Services



Assembly Solutions for EV



I-ETECH PVT LTD

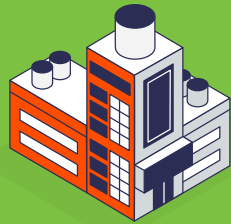
www.ietechworld.com



»» *Sustainability*

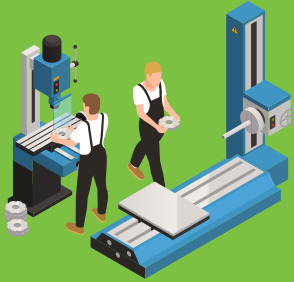


We prioritize sustainability in our operations by focusing on eco-friendly manufacturing processes, reducing waste, and sourcing materials from responsible suppliers. We strive to minimize the environmental impact of our products and support the overall sustainability goals of the EV industry.



We have experience of 35 Years and are proud to be one of the top moulders and tool manufacture in Delhi.

Strategically located manufacturing unit spanning 35000 Sq Ft manufacturing area.



Custom injection moulding components manufacturer with state of the art tool room facilities.

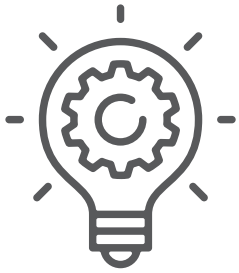


At I-ETECH, we specialize in manufacturing High-quality Moulds for a diverse range of Automotive components

We are professionally managed company with expertise in moulding technology, we provide comprehensive solutions for EV Two wheeler complete plastic body panel kits, chassis, cradles, and seats. Additionally, we offer painting services for the parts, ensuring a seamless finish.

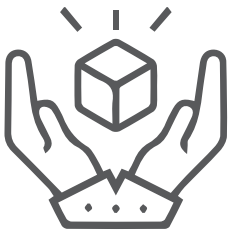


ISO 9001:2015 certified co.



Innovation

We foster a culture of innovation, continuously investing in research and development to offer the latest advancements in EV components. We collaborate closely with EV manufacturers to understand their requirements and develop tailor-made solutions that meet their specific needs.



Quality

We are committed to delivering components of the highest quality, adhering to stringent manufacturing standards and conducting rigorous testing procedures to ensure durability, reliability, and compliance with industry regulations.



Collaboration

We value strong partnerships and collaboration with EV manufacturers, working closely with them to understand their challenges and goals. By fostering open communication and mutually beneficial relationships, we aim to provide comprehensive support and exceed their expectations.



Our Commitment

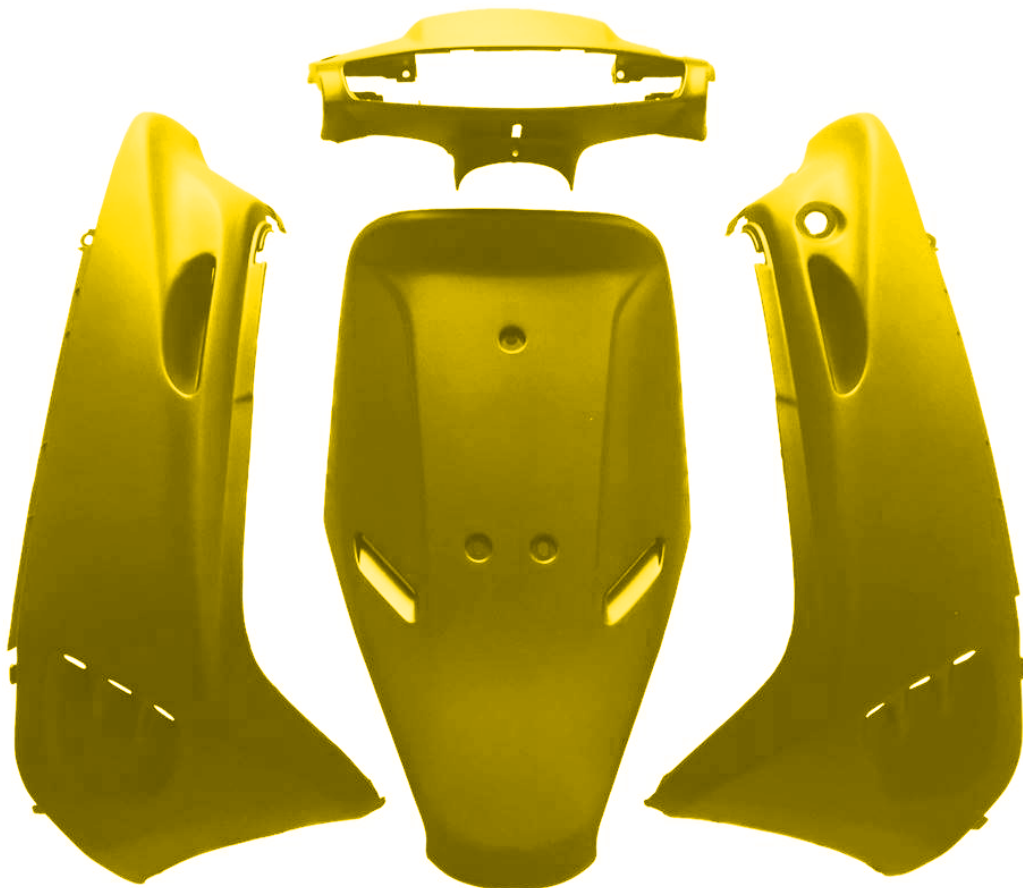
We are dedicated to delivering superior moulds that meet the highest industry standards. Our focus on precision, quality, and customer satisfaction ensures that the molded components align with your exact specifications. With a state-of-the-art assembly line and efficient painting services, we offer a comprehensive solution for your automotive component needs.

Partner with us to benefit from our expertise in mold manufacturing, precise assembly, and painting services, enabling you to enhance the quality and efficiency of your automotive production processes.



Injection Moulding for EV Two Wheeler

- Complete Plastic Body Panel Kits
- Cradles
- Chassis
- Seats





Plastic Molding Services



Body parts



**Injection Moulding
Parts**



Cradles



Seats



Assembly Line



Painting Services

High-quality painting of molded parts for a seamless finish



Product Line

Automotive Exterior Parts

Our products are used in end user product (Two Wheelers)



Mirrors



Body Panels





Product Line

Automotive Exterior Parts

Our products are used in end user product (Four Wheelers)



Tooling With Latest Technology

S. No.	Machine	Make	Model	Description
1	Wire cut	Electronica	Sprintcut	Travel : 400 mm x 300 mm x 225 mm
2	EDM	Electronica	5535	Travel : 50 A Pulse Generator 550 mm x 350 mm
3	EDM	JOEMARS	AZ50TR	Travel : 50 A Pulse Generator 400 mm x 400 mm x 300 mm
4	VMC	HAAS	VF-2	Travel : 762 mm x 406 mm x 508 mm
5	VMC	HAAS	VF-3	Travel : 1000 mm x 508 mm x 500 mm
6	Surface Grinder	Guru Arjan 4 Nos.	AJ2	Bed Size : 500 mm x 200 mm
7	Automatic Grinder	Praga		Bed Size : 500 mm x 200 mm
8	Milling	Precicut 4 Nos.	2S	Travel : 1020 mm x 254 mm
9	Lathe	HMT	LTM20	1000mm Bed Length
10	Radial Drill	Batliboi	613	63 mm Boring Capacity
11	Hardness Testing Machine	Rockwell		Max. Load 150 kg

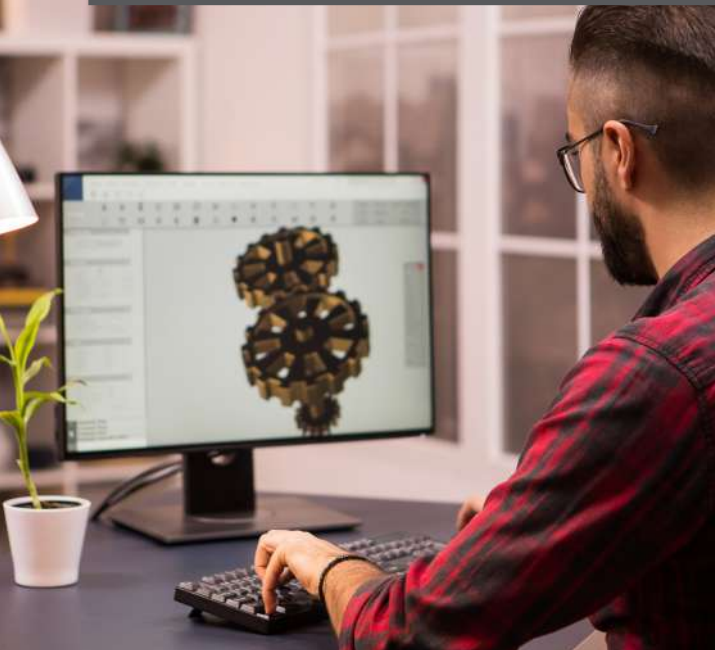


Our Moulding Capacities

S.No.	Moulding Machines	Clamp Tonnage (Tones) Max.	Shot Wt. (gms)
1	Ferromatik Milacron	450	1530
2	Bole	350	1000
3	JSW	250	600
4	Ferromatik Milacron	230	750
5	Toshiba	220	402
6	JSW	200	215
7	Toshiba	190	260
8	Ferromatik Milacron	170	355
9	Ferromatik Milacron	155	325
10	Ferromatik Milacron	150	303
11	Bole	160	250
12	Ferromatik Milacron	145	150
13	Ferromatik Milacron	140	140
14	Ferromatik Milacron	135	135
15	Toshiba	125	210
16	Nigata	120	200
17	Ferromatik Milacron	115	128
18	Toshiba	110	162
19	Pratishna	100	160
20	Pratishna	90	155
21	Sperry	80	150
22	Swift	75	104



Manufacturing / R&D

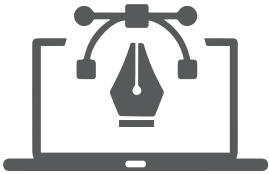


- Fully Equipped Area for Assembly & Sub Assemblies
- Efficient Material Handling System supported by Goods Lift
- Motor Driven Over Head Cranes.

I-ETECH engineers have the ability to combine unique ideas and advanced technology into innovative and superior products. And, along the way, I-ETECH has built a reputation for uncompromising quality. The I-ETECH development facilities consist of design and research engineering, product manufacturing and Testing laboratory. The development team works together with our customers to bring a product from concept, through design and testing, into final production.



Product Design & Development



Design

- Solid works - Four Stations
- Auto Cad/Drafting Release 2014 : Three Stations
- Delcam / Powershape 5.5 : One Station

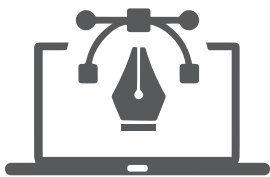


Development

- Delcam Power Mill 5.5 : One station
- Conventional/Unconventional machines 12 nos.
- Capability for Precision Moulds, Designing Moulds & Delivering Engineering Solutions by using latest Techniques & available Technologies.



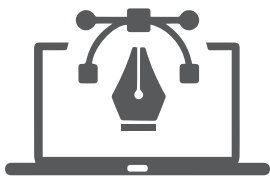
Product Design & Development



- Capacity of Developing 200 Moulds Per Annum (Hot runner/Hot sprue/Three plate, Two plate, Cold Runner) With an Average Lead Time of 4-6 Weeks & Maintenance of Over 50 Moulds.
- Capability to manufacture moulds for 10 Tonnes to 700 Tonnes Injection molding Machines.
- Capability to manufacture moulds to deliver accuracy within 2 microns



Product Design & Development

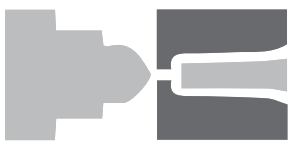


- Development of Moulds increased by 22% in the Financial Year 20-21.
- 2 EDM have been added to the tool room in the financial Year 16-17.
- Manpower increase by two times in the financial year 21-22.
- Addition of VMC VF2 (HAAS) in the financial year 21-22.
- Expansion of Design & Development Under Process. The proposal is to dedicate 1000 Sq feet to the D & D facility.
- Mould Development Capacity will increase by 40% in the financial Year 22-23.



Manufacturing Shop Floor

I-ETECH has a state-of-the-art facility that provides high quality services to its clients in the following services:



- Dedicated Team of Processing Engineers.
- 30 Years of Experience of Processing Engineering Polymers & Various Polymer Compounds
- Over 20 CNC operated injection moulding machines ranging from 80~450
- Tonnes available for bulk production.
- Range includes make of over 20 Plastic Injection Molding Machines like
- Ferromatik, Toshiba, JSW, Windsor, Nigata, Pratishna & Bole.
- Processing Capability Up to 1530 gms Of Shot Weight
- All Machines are CNC Controlled & Fitted With Hopper Dryers & Loaders.



I-ETECH PVT LTD



Plot No.109/B, Road No.1, Indraprastha Industrial Area
Near Dakniya Station, Kota, Rajasthan, India



+91 98101 09776
+91 88007 18476



karan@ietechworld.com

www.ietechworld.com

